

Alaska Department of Fish and Game

Habitat Section
Southeast Region



182-70-12000-2013-3017-4008 Tributary 1

ADDITION

Water body name:

Quad: Yakutat B-4

Upper Reach Latitude: 59.469196 **Longitude:** -139.135028

Lower Reach Latitude: 59.468717 **Longitude:** -139.135809

Findings: We surveyed this uncataloged stream from the road using baited minnow traps and GPS and captured juvenile coho salmon (Figure 1). The stream is slow moving through a wetland and backwatered in the culvert (Table 1; Figures 2, 3). Multiple age classes of juvenile coho were captured indicating nearby spawning habitat. The culvert does not appear to be a barrier to fish passage and future investigation upstream is recommended.

Recommendations: Add this uncataloged stream to the anadromous waters catalog for rearing coho salmon (Figure 4).

Nomination: Pending

Survey date: 9/15/2024

Species & Lifestage: CO

Survey crew: CD, FC

Table 1.–182-70-12000-2013-4008 Tributary 1 survey data.

Waypoint	Latitude	Longitude	Notes	Stream Width ft	Stream Substrate	Habitat Features	Gradient %	Sample Effort	Sample Results
1238	59.469199	-139.135049	Minnow trap set downstream of 2 ft CMP.	4-6	Fine Organic			MT	10 CO



Figure 1.–Juvenile coho salmon and Dolly Varden captured at waypoint 1238.



Figure 2.—Inside of culvert at waypoint 1238.



Figure 3.—Culvert upstream of the road.

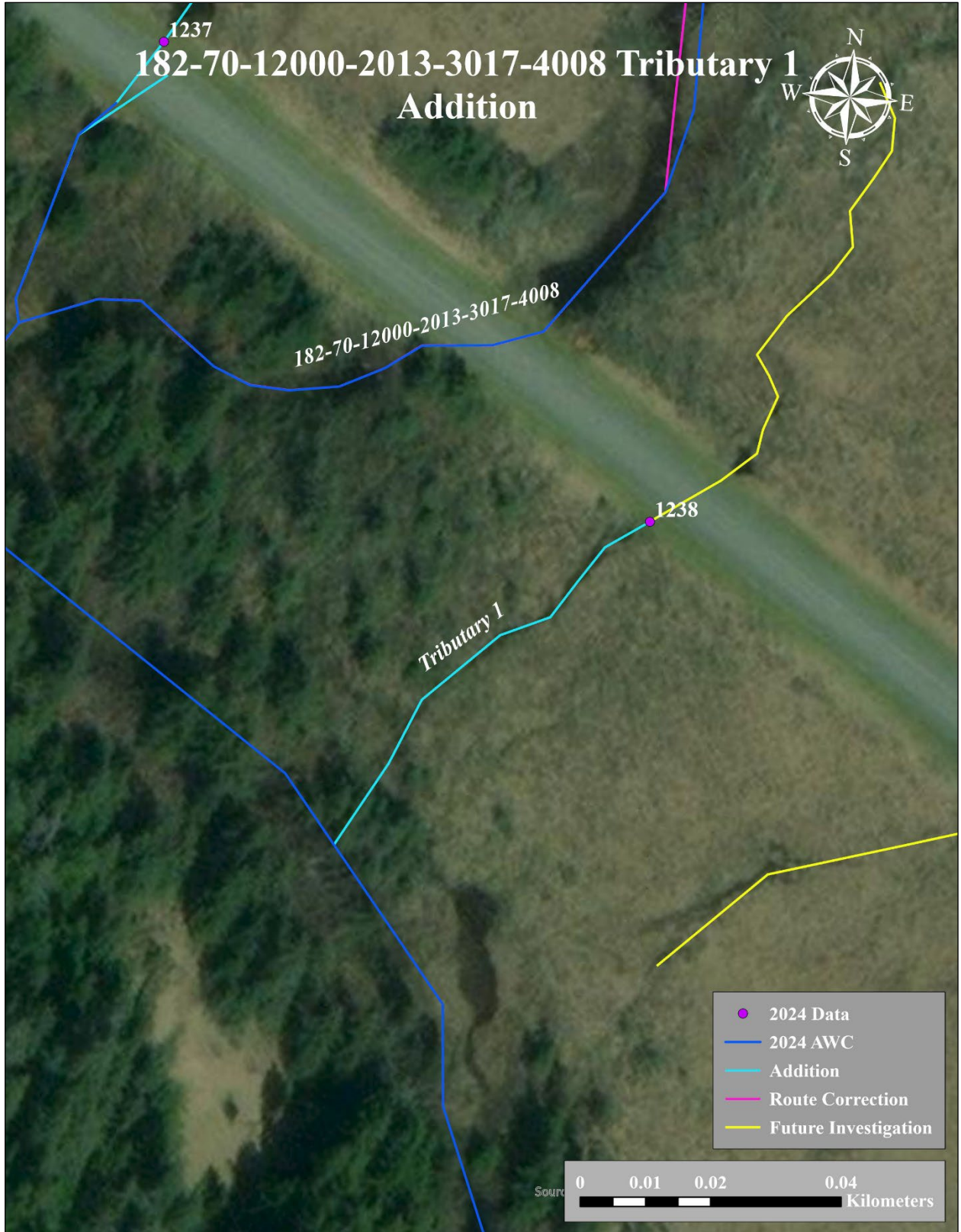


Figure 4.—187-70-12000-2013-3017-4008 tributary 1 addition map.